

Fig. 1

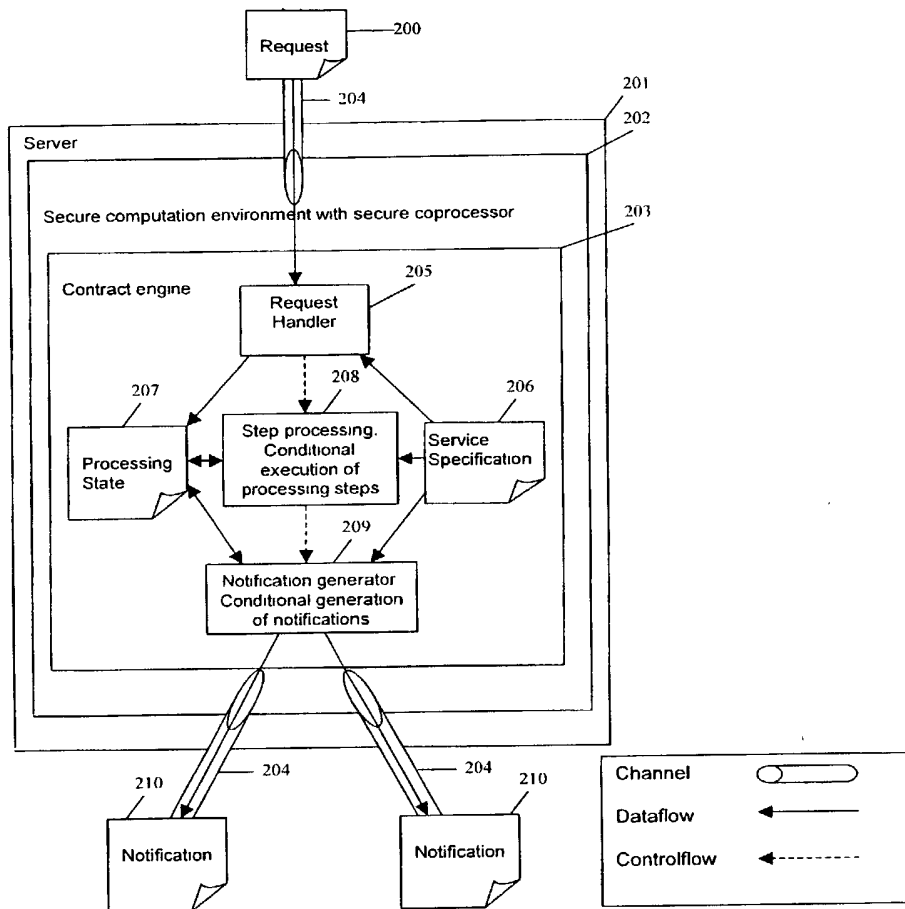


Fig. 2

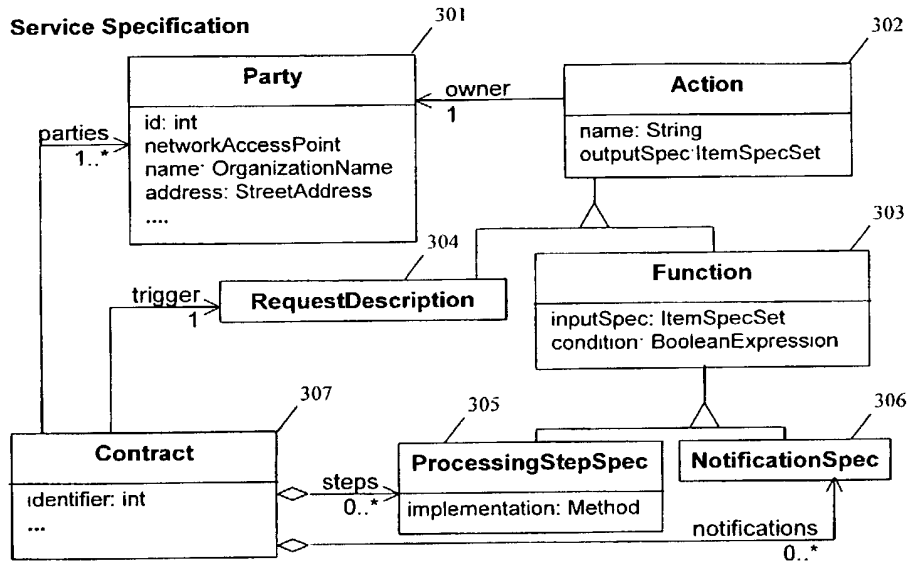


Fig. 3A

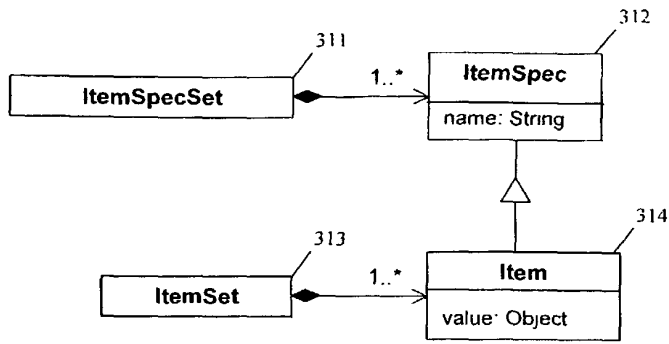


Fig. 3B

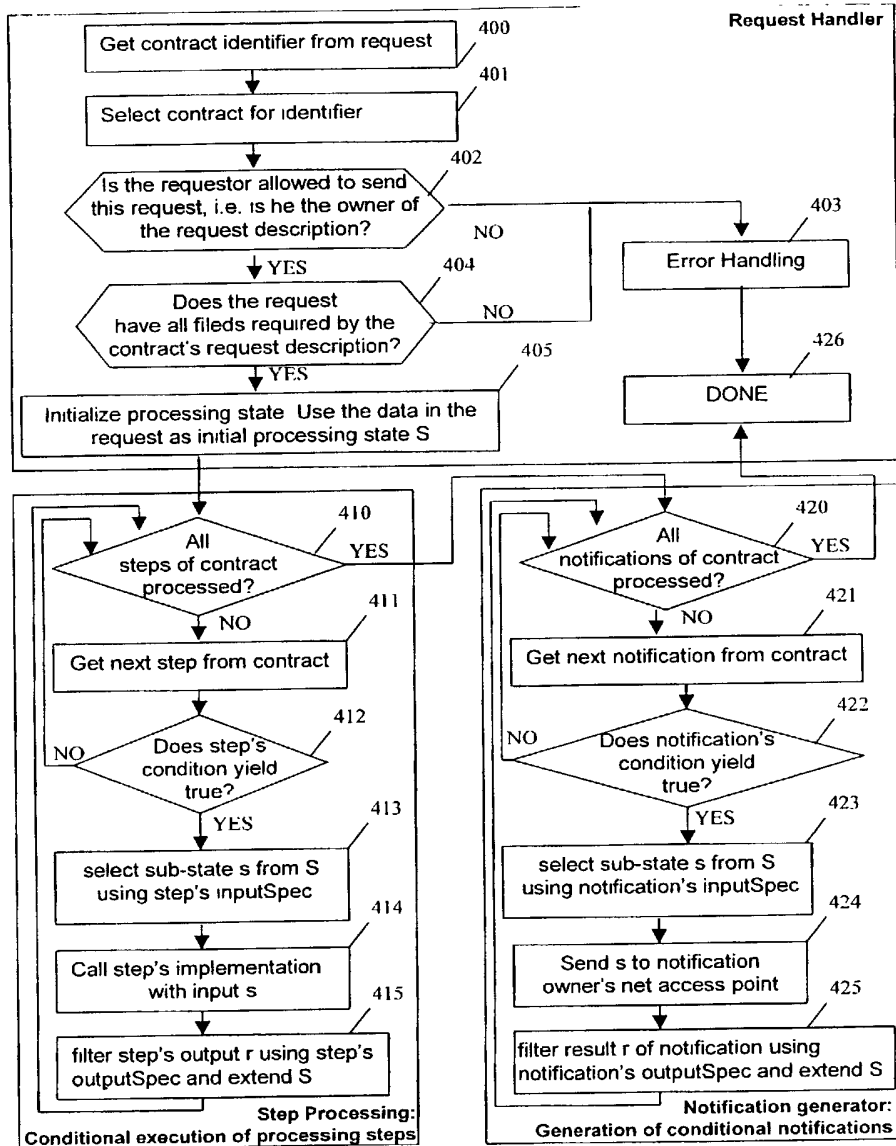


Fig. 4A

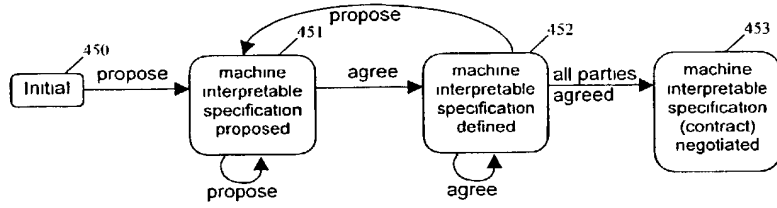


Fig. 4B

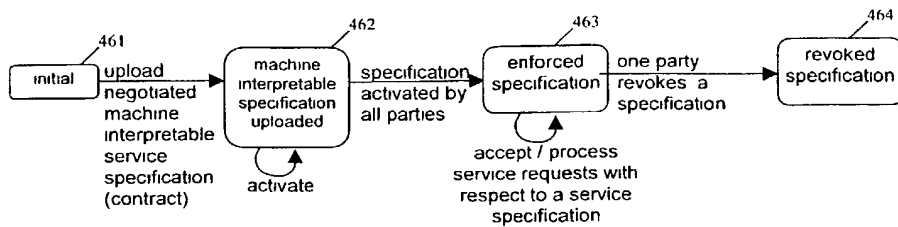


Fig. 4C

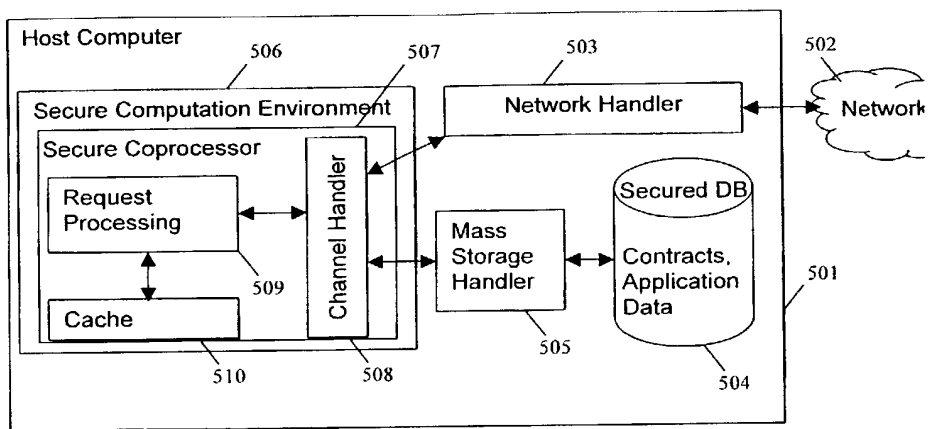


Fig. 5

601	Contract ID:	4711B5		602					
	Parties:	A	ABC Airport	603					
		B	QRS Agency						
		C:	XYZ Law Enforcement						
	Action / Owner / Condition	Item	1:n Matching	Biometric Matching	Decoy Generation	Response1	Response2	Response3	Response4
605	Request / A	Contract Id	/	/	+	/	/	/	/
		First Name	/	/	/	/	/	/	/
		Last Name	+	/	/	+	+	/	/
		Date of Birth	+	/	/	-	+	/	/
		Act Finger Print	/	/	/	/	/	/	/
606		Location	/	/	/	-	+	/	/
	Transaction No.	/	/	/	/	/	/	+	
608	1:n Matching against Watch List XYZ / B / True	Matched	/	/	/	/	/	/	/
		First Name	/	/	/	+	+	/	/
		Last Name	/	/	/	+	+	/	/
		Date of Birth	/	/	/	+	+	/	/
		Suspect Class	/	/	/	/	/	/	/
611		Filed Finger Print	/	/	/	/	/	/	/
609		Precious Convictions	/	/	/	/	/	/	/
610	Reaction Advice	/	/	/	/	+	/	/	
	Biometric Match / C / Matched	Correlation	/	/	+	+	/	/	
	Decoy Generation / B / NOT Matched	Decoy	/	/	/	/	+	/	
	Notification1 / C / Matched AND Suspect Class < 5	Return Code C	/	/	/	/	/	+	
	Notification2 / C / Matched AND Suspect Class > 4	Return Code C	/	/	/	/	/	+	
	Notification3 / C / NOT Matched	Return Code C	/	/	/	/	/	+	
	Notification4 / A / True	Return Code A	/	/	/	/	/	+	
									608

Legend:

1	include data item (row) in action's (column) input specification,
/	exclude data item from action's input specification,
	not applicable, since data item is not yet computed

Fig. 6

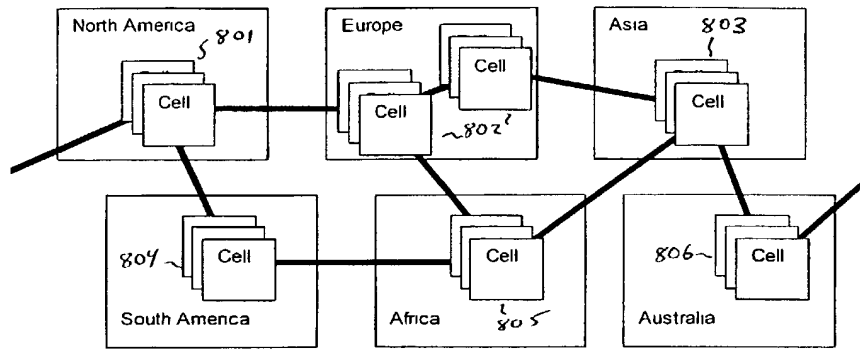


Fig. 7

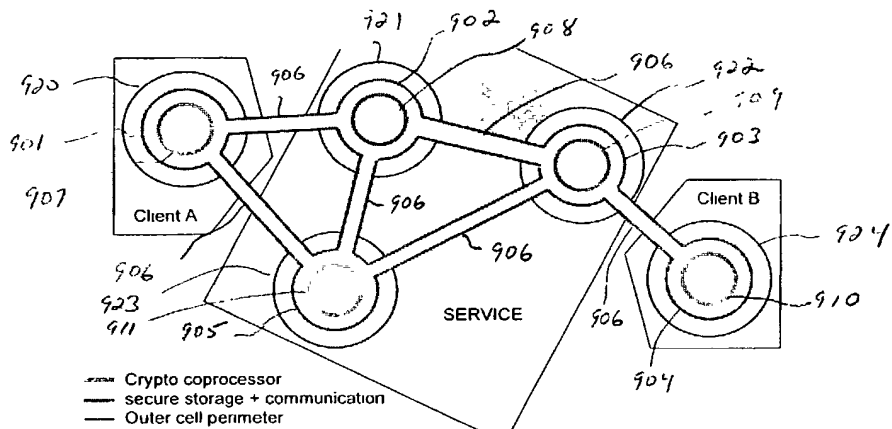


Fig. 8

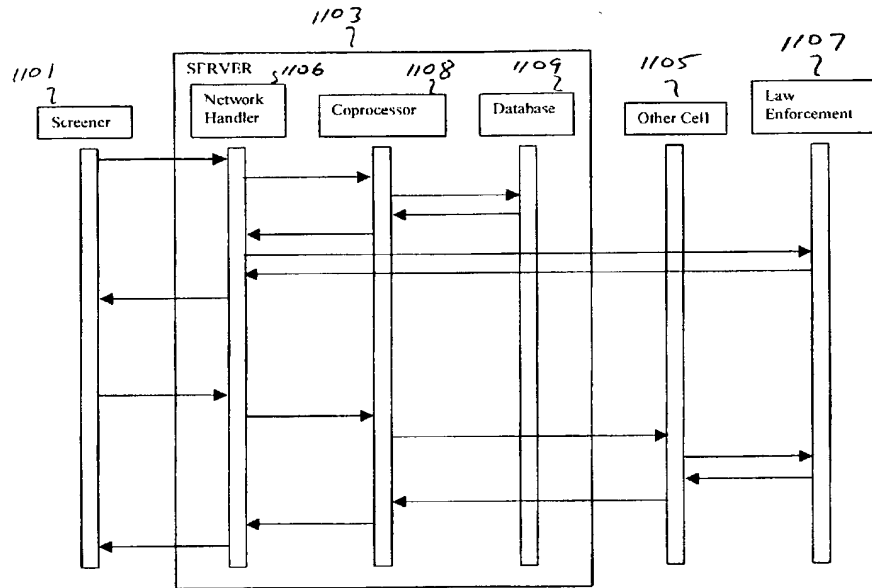
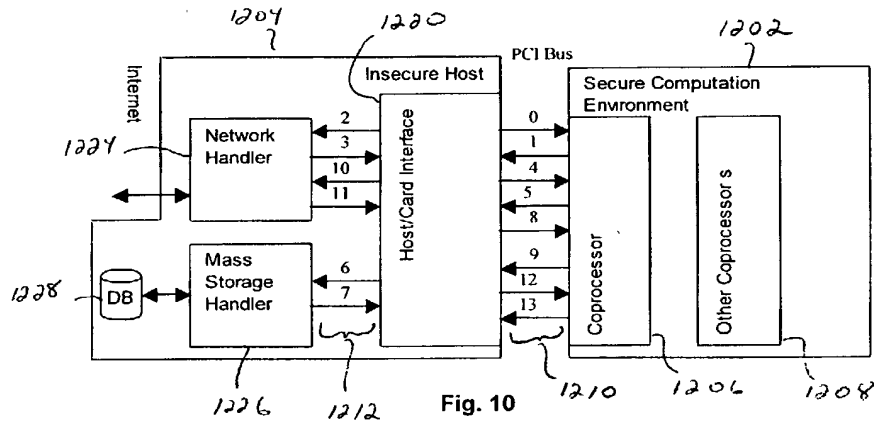


Fig. 9



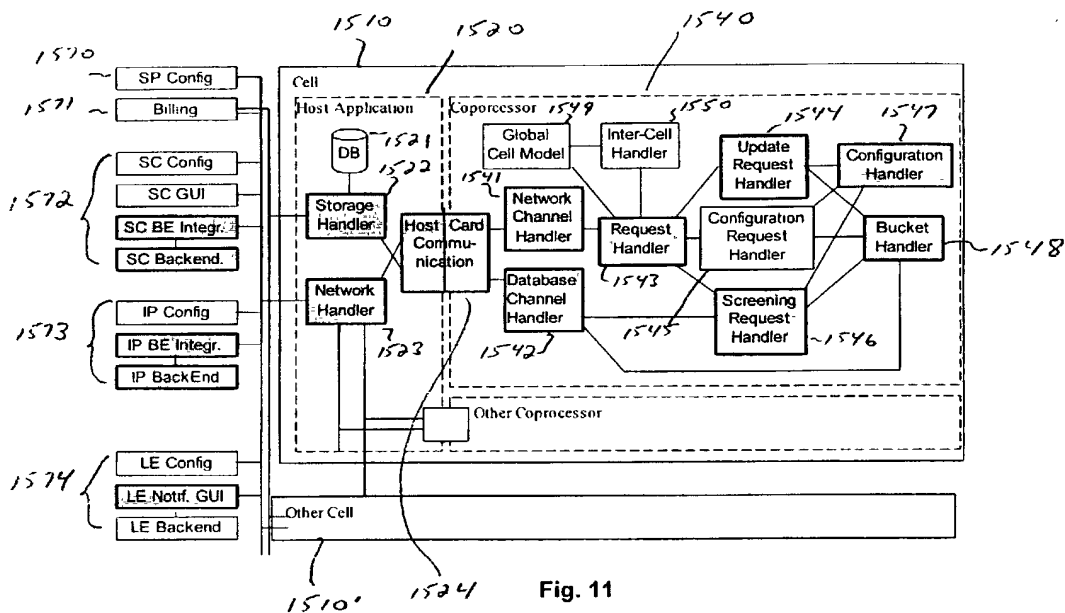


Fig. 11

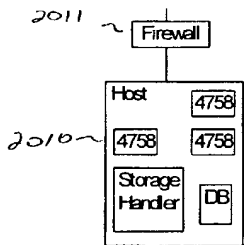


Fig. 12A

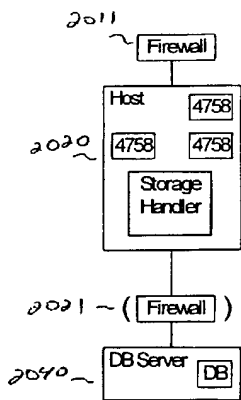


Fig 12B

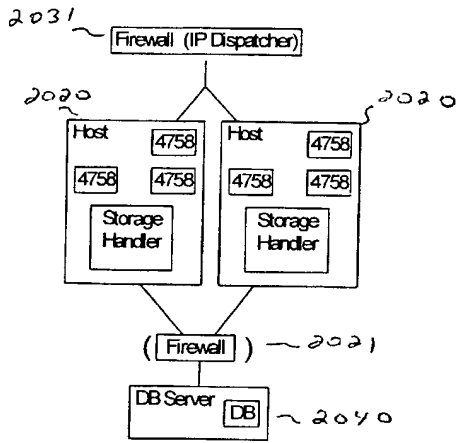


Fig. 12C